

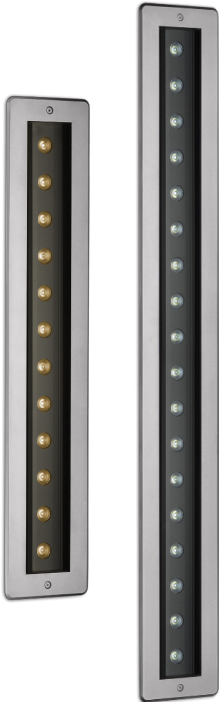
# PARADE L RECESSED

Static White



## DESCRIPTION

PARADE L recessed linear luminaires are available in two or three foot lengths. Each model features premium quality high-brightness LEDs and a comprehensive selection of eight light distributions. Standard built-in programming capabilities include standalone or master-satellite configurations without the use of external control systems, or operation by remote DMX512 control systems. Recessed housing, trim, and hardware are stainless steel.



Date: \_\_\_\_\_ Type: \_\_\_\_\_ Catalog Number: \_\_\_\_\_

Project Name: \_\_\_\_\_

## ORDERING INFORMATION

LUMINAIRE						
MODEL	CCT	CONTROL	CABLE	VOLTAGE	OPTIC	OPTION
<b>PDL2R</b> Parade L2 Recessed- 2' Length	<b>27K</b> 2700K	<b>DMX-RDM</b> DMX-RDM	<b>M</b> Monocable only (19.7")	<b>UNV</b> 120-277v	<b>SP</b> Spot 8°	<b>LVR</b> Internal Honeycomb Louver
<b>PDL3R</b> Parade L3 Recessed- 3' Length	<b>30K</b> 3000K				<b>NB</b> Narrow 10°	
<b>PDL2RPE</b> Parade L2 Recessed Polar Edition- 2' Length	<b>40K</b> 4000K				<b>MB</b> Medium 26°	
<b>PDL3RPE</b> Parade L3 Recessed Polar Edition- 3' Length					<b>WB</b> Wide 40°	
					<b>EW</b> Extra Wide 58°	
					<b>ELH</b> Elliptical 42° x 11°	
					<b>ELWH</b> Elliptical Wide 40° x 24°	
					<b>WW</b> Wall Wash 36° x 15° (5° Incline)	

Custom options are available; consult factory for assistance via phone at (864) 487-3535 ext. 258 or via email at DesignServices@EXP-Brands.com.

See Page 4 for ordering information of available and required accessories.



# PARADE L RECESSED

Static White



		PARADE L2 RECESSED	PARADE L3 RECESSED
PHYSICAL	HOUSING	Extruded Aluminum	
	LENS	Tempered Glass	
	DRIVER LOCATION	Integral	
	DIMENSIONS (LUMINAIRE + BACK BOX)	26 ¾" L x 5 ⅝" W x 4 ⅝" H	38 ¾" L x 5 ⅝" W x 4 ⅝" H
	WEIGHT	15.2 Pounds	21 Pounds
	OPERATING TEMPERATURE	-40°F to 122°F (-40°C to 50°C)	

ELECTRICAL	INPUT VOLTAGE	Universal 120 to 277 Volts	
	POWER CONSUMPTION	38 Watts	58 Watts
	CURRENT	0.32 Amps at 120 Volts 0.14 Amps at 277 Volts	0.48 Amps at 120 Volts 0.21 Amps at 277 Volts
	CONTROL	Integrated DMX-RDM Control System	
	CONNECTION KIT	GRIVEN-CON-KIT-8287	

PHOTOMETRIC	LED	Static White 2700K, 3000K, or 4000K	
	LUMEN MAINTENANCE	L80 > 70,000 Hours at 77°F*	
	CRI	80 or 90 CRI	

		PARADE L2 RECESSED						PARADE L3 RECESSED					
LIGHT DISTRIBUTIONS	DISTRIBUTION	2700K		3000K		4000K		2700K		3000K		4000K	
		LUMENS	EFFICACY	LUMENS	EFFICACY	LUMENS	EFFICACY	LUMENS	EFFICACY	LUMENS	EFFICACY	LUMENS	EFFICACY
	SPOT 8°	3867	102	3903	103	4203	111	5854	103	5854	103	6331	111
	NARROW 10°	3548	93	3581	94	3856	101	5370	94	5370	94	5808	102
	MEDIUM 26°	3482	92	3515	93	3785	100	5270	92	8270	92	5700	100
	WIDE 40°	3358	88	3389	89	3650	96	5084	89	5084	89	5497	96
	EXTRA-WIDE 58°	2776	73	2801	74	3017	79	4202	74	4202	74	4544	80
	ELLIPTICAL 42° X 11°	3221	85	3251	86	3501	92	4877	86	4877	86	5274	93
	ELLIPTICAL WIDE 40° X 24°	3220	85	3250	86	3500	92	4875	86	4875	86	5271	92
	WALL WASH 36° X 15° (5° INCLINE)	3076	81	3105	82	3344	88	4659	82	4659	82	5038	88

CERTIFICATIONS	SAFETY	ETL Certified for Wet Locations	
	INGRESS PROTECTION	IP67	
	IMPACT RATING	IK10	
	WARRANTY	Five Year Limited Warranty	

\* LED life may vary under actual field conditions due to external factors. Lifetime estimates are generated from actual testing in a controlled environment. Values are conservatively derived from those numbers.

# PARADE L RECESSED

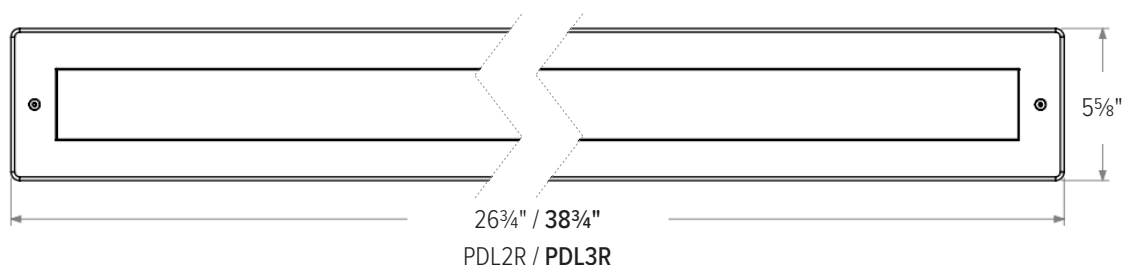
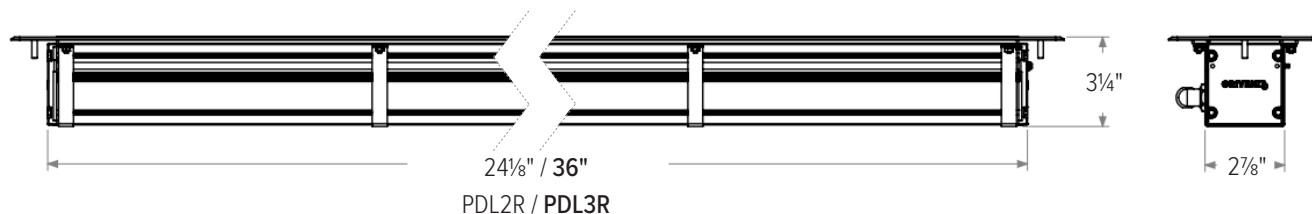
Static White

GRIVEN 

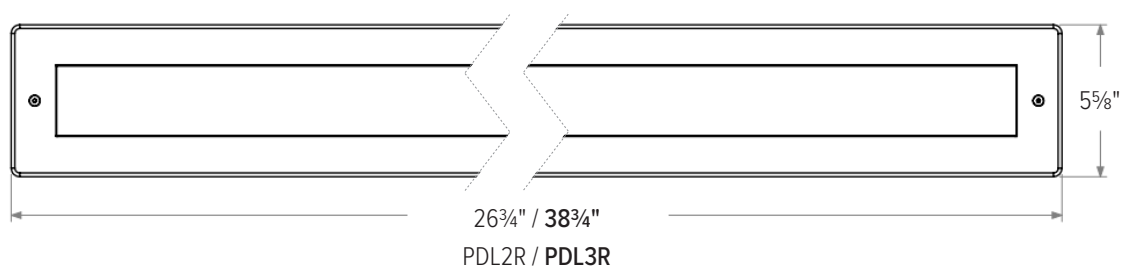
## DIMENSIONS

All dimensions are shown in inches unless otherwise noted.

### *Luminaire Dimensions*



### *Luminaire Dimensions with Recessed Back Box*



## CUSTOMIZE YOUR **EX**PERIENCE.

At Experience Brands, we believe every space deserves unique lighting elements. We proudly specialize in crafting solutions that reflect your personal vision. Our expert team is here to collaborate with you to design and implement customized features that elevate your environment.

**Ready to Get Started?** Email us at: [DesignServices@exp-brands.com](mailto:DesignServices@exp-brands.com)

# PARADE L RECESSED

Static White



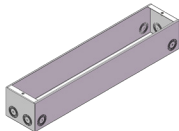
## ACCESSORIES

NOTE: Accessories are ordered and shipped separately from luminaire for field installation.



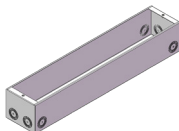
IR-CONFIG-REMOTE

Infrared DMX Configuration Remote



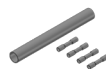
PDL2R-RBB

Parade L2 Recessed Back Box



PDL3R-RBB

Parade L3 Recessed Back Box



GRIVEN-CON-KIT-8287

Connection Kit for "M" Cable Type

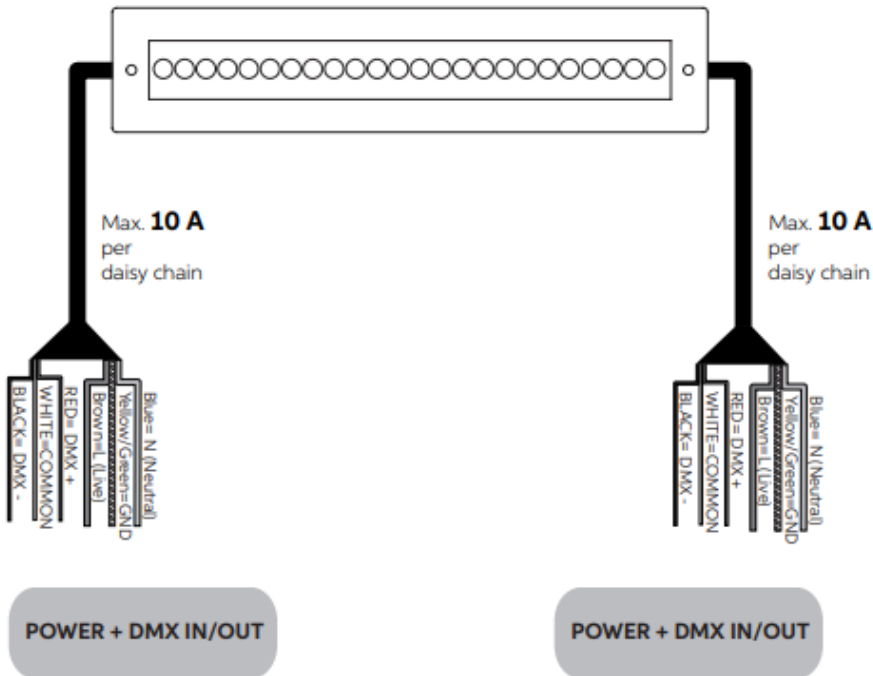
Additional Control and Installation Solutions are available online; [click here to view available options.](#)

## ORDERING INFORMATION

UNPAINTED ACCESSORIES
MODEL
IR-CONFIG-REMOTE Infrared DMX Configuration Remote <sup>1</sup>
PDLR2-RBB Parade L2 Recessed Back Box
PDLR3-RBB Parade L3 Recessed Back Box
GRIVEN-CON-KIT-8287 Connection Kit for "M" Cable

<sup>1</sup>Unless an RDM compatible control is used, one IR-CONFIG-REMOTE must always be purchased with one or more DMX/RDM luminaires in order to access DMX addressing.

## CONNECTIONS



# PARADE L RECESSED

Static White



## INSTALLATION

